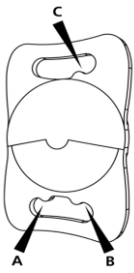
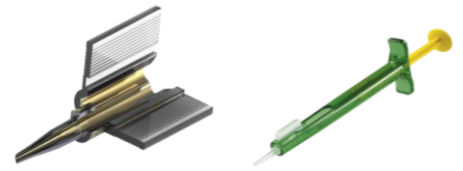


Loading instruction – Viscoject Bio

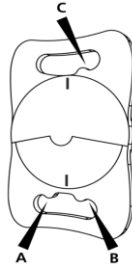
EDOF + MIOL LENTIS® with plate-haptic



LS-313 MF15
LS-313 MF20



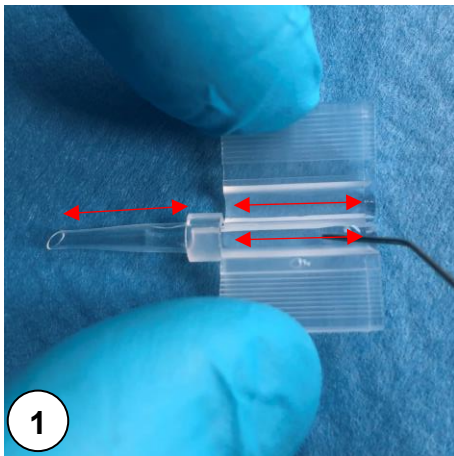
LS-313 MF30
LS-313 MFX30



LS-313 MF15 T0-6
LS-313 MF30 T0-6



LU-313 MF15T/20T/30T/X30T
LU-313 MF15TY/20TY/30TY/X30TY



1
Lubricate the injector tip + loading chamber with viscoelastic solution.



2
Open the IOL blister **away from your body**.



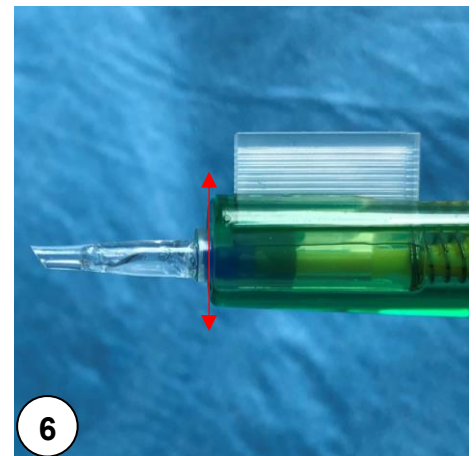
3
Remove IOL holder, align handle towards your body. **Always keep it horizontal!**



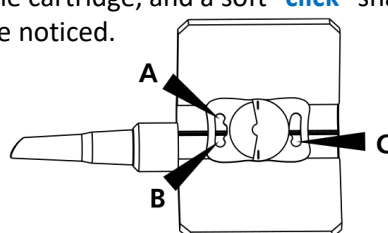
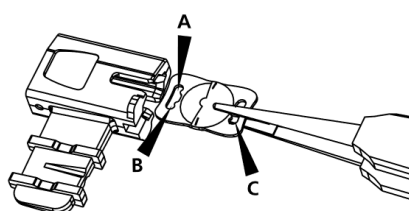
4
Use a non-toothed forceps to remove the IOL from the holder without excessive force & keep the **notch face to the right side!**



5
Place the IOL within the cartridge, ensure the **correct haptic alignment of A, B and C**. **Push the IOL down** with forceps while closing the cartridge, and a soft **"click"** shall be noticed.



6
Place the cartridge into the injector. Advance the plunger until the blue cushion reaches the tip, **gently retract the plunger**. The IOL is ready for implantation.



Steps that need extra attention!